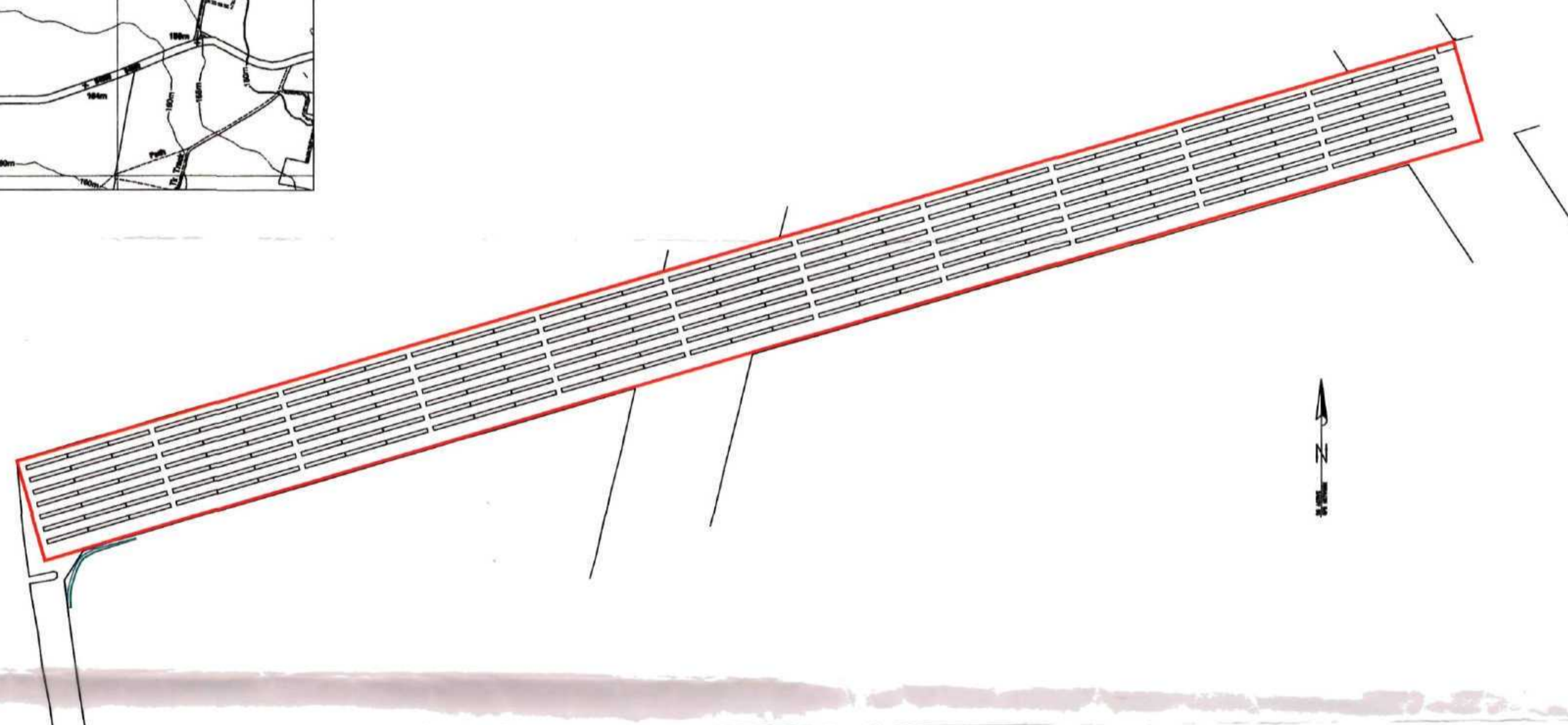
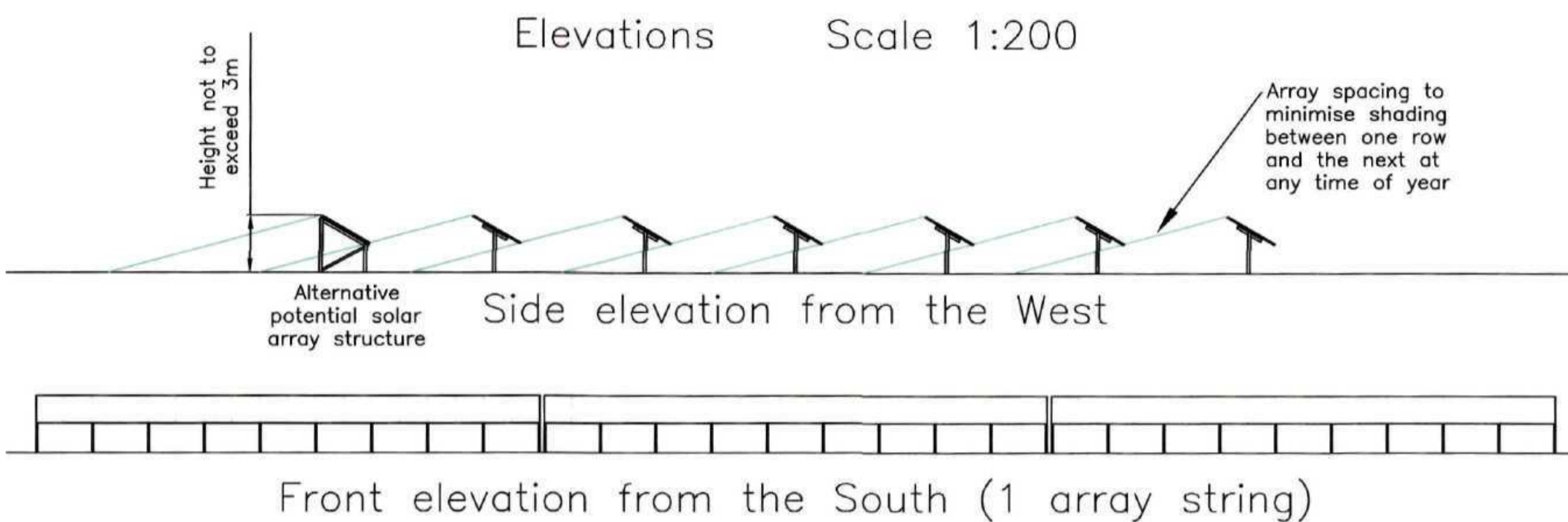
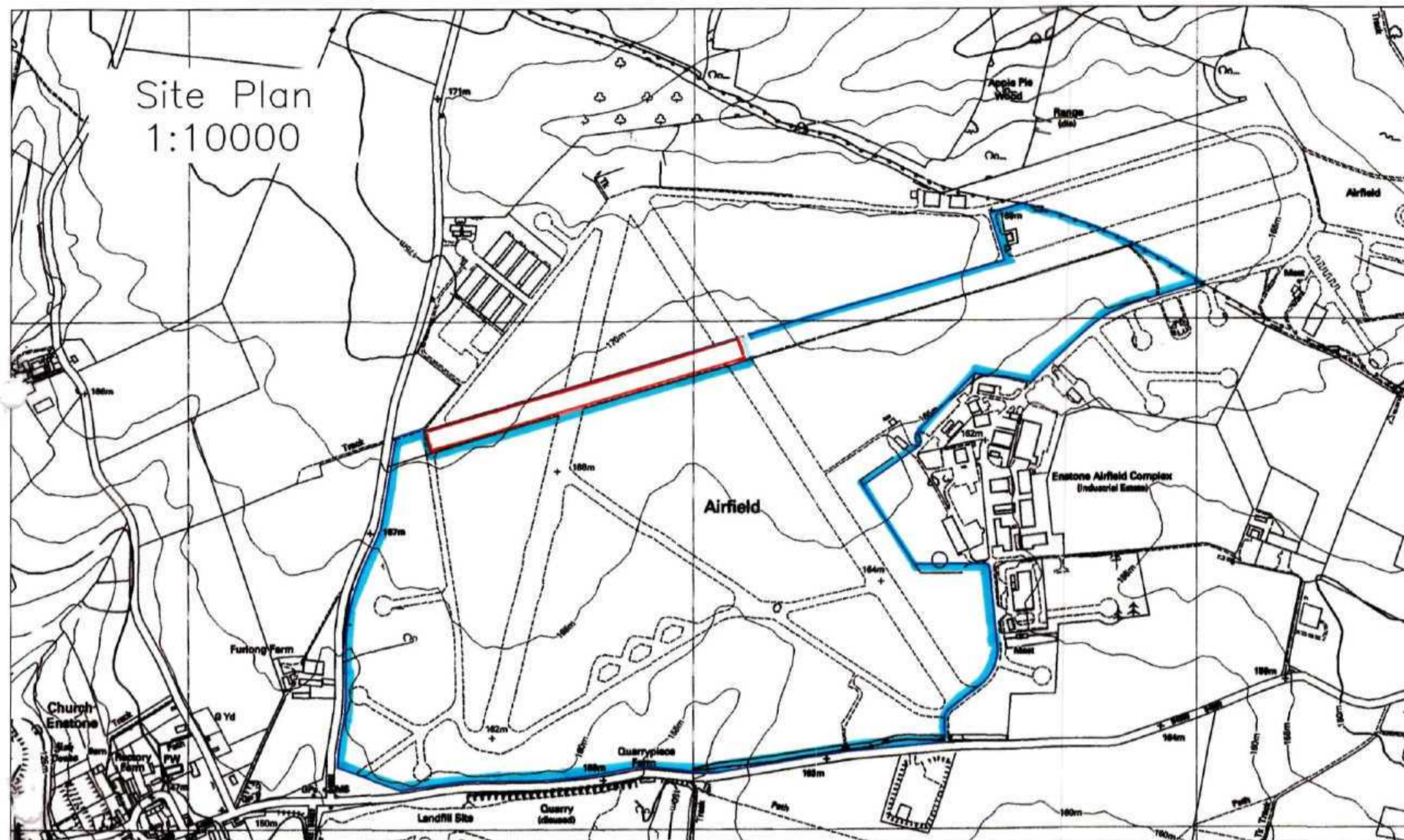


11/1924
16 DEC 2011



Notes:

1. Solar array and system layout is indicative and provisional pending final design optimisation, confirmation of connection capacity and registration accreditation from the energy regulator.
2. Solar arrays and other equipment cover an area of no more than 7,500 square metres within the red-lined boundary of 2.87 hectares
3. Chain-link fence no more than 3m high to be erected on the red-line boundary.
4. No more than 2 equipment and transformer housings each no more than 3x8m and 2m high to be located within the compound.
5. Output cable to existing network to be under-ground. Indicated cable route is provisional pending confirmation from the local Distribution Network Operator

This drawing is copyright and the property of Renewable Energy Tariffs Limited. It must not be copied, in whole or in part, used or otherwise disclosed without the prior written consent of the Company. Any copies must also include a copy of this legend.
(c) Renewable Energy Tariffs Ltd. 2011

20 40 80 120 160	Do not scale from this drawing	
Scale: 1:2000	Status: Draft	
When plotted at: A2	Drawn: PW	
Dimensions in: m	Approved: NMT	

No.	Revision	Date
A	First draft	11-10-11
1	For planning	31-10-11

Drawing No: S2512-101
Enstone Solar Park site plan



File Ref: 2SolarParks\<Enstone\Drawings\101